

Exploring the World Economy  
Leading the Korean Economy



# Korea Institute for International Economic Policy



**KIEP** Korea Institute for International  
Economic Policy

Building C, Sejong National Research Complex, 370, Sicheong-daero, Sejong-si, 30147, Korea  
Tel 82-44-414-1114 Fax 82-44-414-1122

## The Korea Institute for International Economic Policy (KIEP)

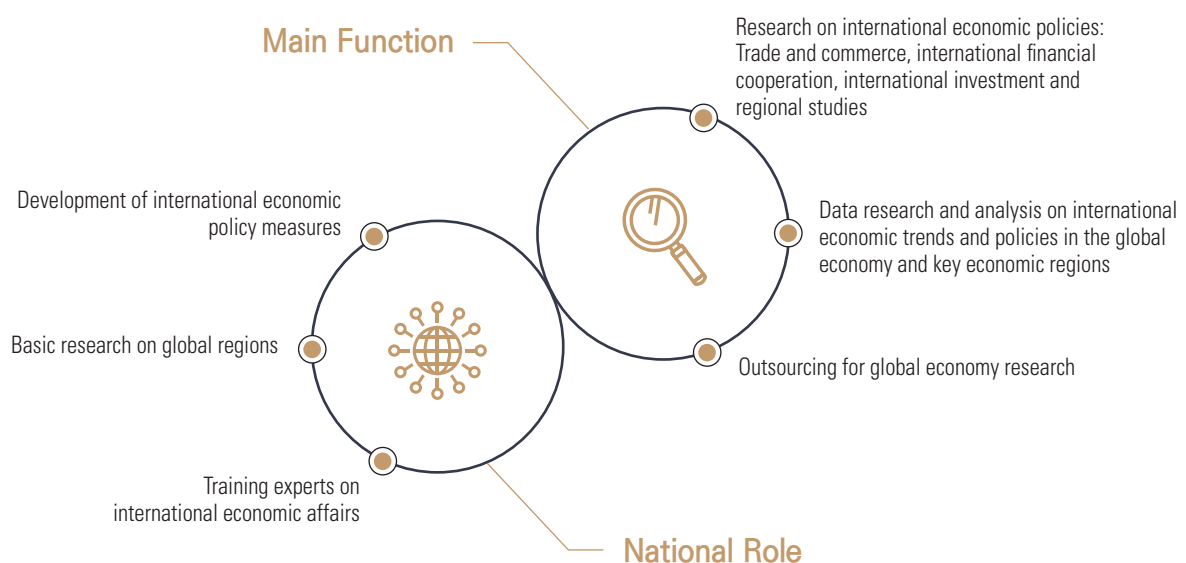
studies global economic issues to find solutions for the development of the Korean economy.

We contribute to the establishment of the nation's international economic policies by reading the changing trends of global economic issues.

Since its founding as a government-funded economic research institute in 1989, KIEP has been researching, studying and analyzing a wide variety of domestic and international economic issues, working to establish the international role played by the Korean economy and promote its standing in the global economy.



## KIEP's Mission



1989

1989. 08  
KIEP (Korea Institute for International  
Economic Policy) Foundation established

1989. 12  
KIEP re-established by Special Act (Foundation dissolved)

• History of  
• Korea  
• Institute for  
• International  
• Economic  
• Policy

1990..

1990.01

• KIEP begins operations,  
• Supervisory responsibility over US KEI transferred  
• to KIEP, KOPEC Secretariat relocated to KIEP

1992.01

• Establishment of the Northern Regional Center  
• (Int'l Private Economic Council of Korea disbanded)

1992.10

• Northern Regional Center renamed as  
• Center for Regional Information

1994.01

• Designated as the secretariat for  
• Korea's Official pool of International Economists

1994.12

• Designated as the Korea APEC Study Center  
• (International Economy Coordinating Committee)

1995.03

• KIEP Beijing Office established

1997.01

• Establishment of Center for Northeast Asia Research  
• and Development (CNARD)

1997.10

• Center for Regional Information becomes part of KIEP

1999.01

• Amendment of the basic law on KIEP (Law on KIEP  
• → Law on Establishment, Operation and Promotion  
• of Government-funded Research Institutions)

2010..

2010.02

• China Regional and Provincial Research Group  
• launched

2011.03

• Responsibility for KOPEC Secretariat services transferred to KIEP  
• (the incorporated association of the KOPEC disbanded and absorbed into KIEP)

2011.08

• Center for Regional Economic Studies & Research abolished  
• Center for Emerging Economies Research established

2012.02

• Designated as a specialized research institution for international  
• events by the instructions of the Ministry of Strategy and Finance  
• (Regulation on international event invitation and hosting)

2012.03

• Korea-China FTA Research Support Group launched

2013.04

• East Asia FTA (EAFTA) Research Support Group launched

2014.01

• The G20 Research Support Group launched

2014.05

• Establishment of the KU-KIEP EU Center

2015.06

• Establishment of the Department of North East Asian Economies,  
• and the Strategy Research Team

2000..

2000.04

• Regional Information Center abolished  
• Center for Regional Economic Studies & Research established

2002.03

• Establishment of the DDA Research Center

2003.04

• Center for Northeast Asia Research Development abolished  
• Center for Northeast Asian Cooperation established

2005.12

• Establishment of the SNU-KIEP EU Center

2008.06

• Center for Northeast Asian Cooperation abolished  
• Center for International Development Cooperation established

2018..

2018.04

• The Center for Area Studies established.  
(Chinese Economy Dept, Advanced Economies Dept, New Southern  
Policy Dept, New Northern Policy Dept expanded and reorganized.)

2020.07

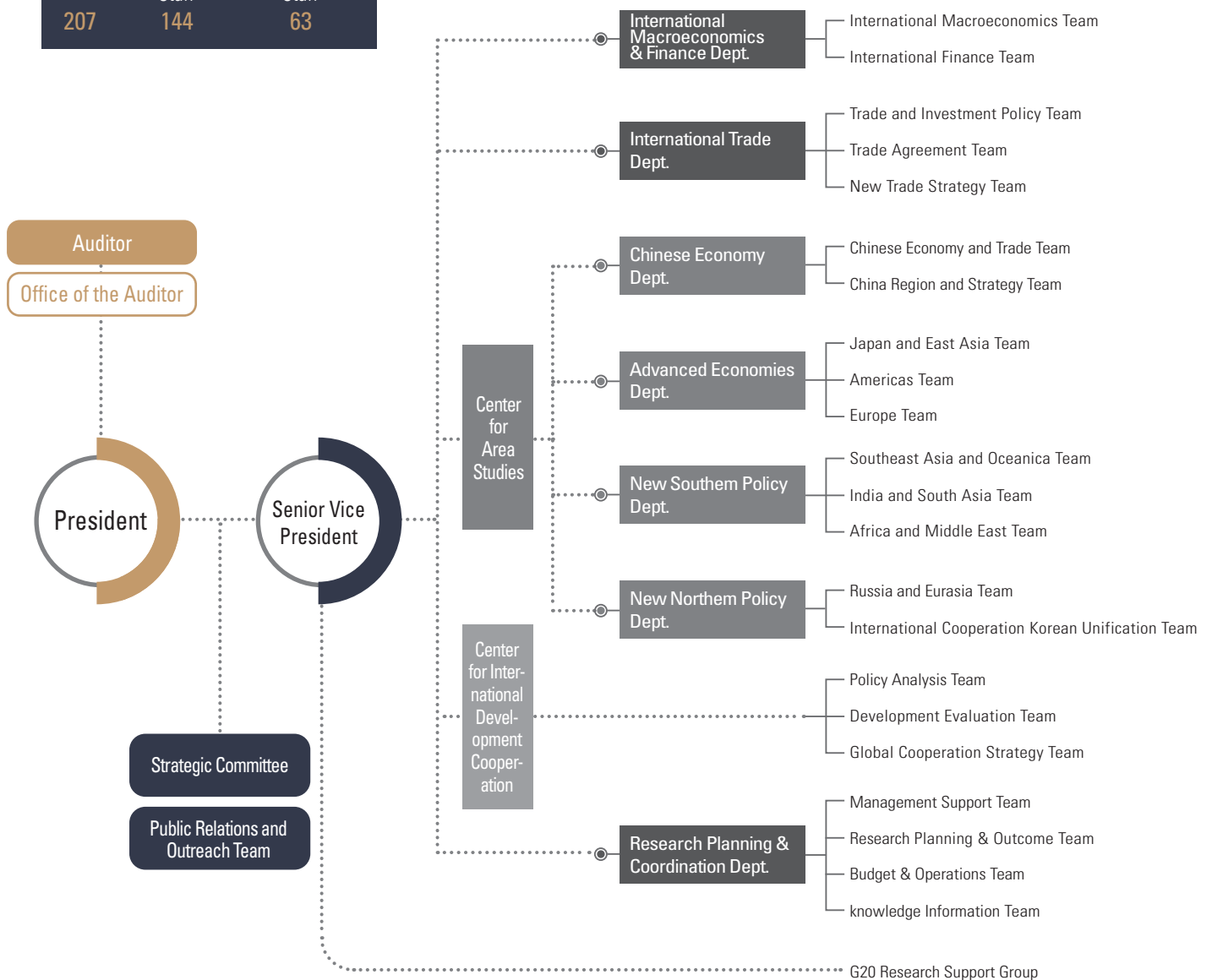
• Center for International Development Cooperation established

## Organization



Research Staff **70%**

Total	Research Staff	Administrative Staff
<b>207</b>	<b>144</b>	<b>63</b>



National Center  
for APEC Studies

Beijing Office

Korea Economic  
Institute of America (KEI)

## Main Research Topic

## International Macroeconomics &amp; Finance Dept.

- Current issues in international macroeconomics and finance
- Changes in the global economy, foreign exchange and capital markets
- Regional cooperation in foreign exchange/finance and reforms in international financial regimes

## Center for Area Studies

## Chinese Economy Dept.

- Current trends and issues in the Chinese economy
- Chinese provincial economy and industries
- Economic cooperations strategies between Korea and China

## New Southern Policy Dept.

- Regional studies on the economies of SE Asia, Oceania and India/South Asia to support Korea's New Southern Policy
- Plans to promote cooperation with emerging economies using soft power
- Emerging regions including Africa and Middle East

## Center for International Development Cooperation

- Trends and policies of major countries in the area of international development cooperation and Korea's ODA policies

## International Trade Dept.

- Korean government policies in trade and commerce
- Analysis of the international trade regime at multinational level (e.g. WTO, APEC, OECD, G20)
- Strategies for promotion of regional trade agreements and assessment of their economic impacts
- New issues in trade and investment (e.g. digital trade, 4th industrial revolution)

## Advanced Economies Dept.

- Advanced regional economies in America, the EU and Japan
- Economic Cooperation with East Asian nations

## New Northern Policy Dept.

- Regional studies on the economies of Russia/Eurasia to support Korea's New Northern Policy
- International economic relations of North Korea, international cooperation for regime change in North Korea and Korean Unification





### International Macroeconomics & Finance Dept.

- Structural Changes and Policy Directions in Korea's Current Account Balance
- A Study on the Effects of Credit Expansion on Economic Growth and Financial Crisis
- Ten Years of International Macprudential Policies: Achievements and Improvement Plans
- Analysis of Determining Factors of Foreign Capital Movement in the Domestic Stock Market: Centered on Interest and Exchange Rates

### International Trade Dept.

- The Effects of Trade Structure Shifts on Domestic Employment Structures and Policy Implications
- International Spread of Unilateral Trade Policies and Changes in Trade Structures
- Trade Law Issues and Economic Impact of New FTA Trade Rules: Centered on Environment and Labor Issues
- International Dialogue on Intellectual Property Issues and Their Effects
- The WTO Multilateral System in Structural Crisis: Korea's New Response Measures for Multilateral Negotiation

## Center for Area Studies



### Chinese Economy Dept.

- Further Opening of Chinese Financial Markets and Sino-Korean Cooperation in the Area
- Changes in the Local Economies of China Following the Global Financial Crisis and Strategies to Advance into the Chinese Domestic Market



### Advanced Economies Dept.

- Study on Progress of the 4th Industrial Revolution in Japan Based on Solutions to Social Challenges
- Future Development of the Pacific Alliance and MERCOSUR and the Implications
- Analysis of Competition Policies in the US and EU in the Era of Fusion and Convergence between Industries
- Analysis of Intra-Bloc Consolidation of EU Labor Markets and Policy Implications



### New Southern Policy Dept.

- Opportunities for Cooperation between the Indo-Pacific Strategy and Korea's New Southern Policy
- Analysis of Online Platform Market and Implications in New Southern Region
- Status of Development in India's Start-Up Ecosystem and Policy Implications



### New Northern Policy Dept.

- Plans to Promote Investment between Korea and Russia in the 4th Term of President Putin: Focusing on Manufacturing Sectors with High Added Value
- Recent Policy Changes in Major GCC Nations and Korea's Strategic Response Measures
- Progress of Transition Economies in Southeast Asia and the Implications for North Korea

## Center for International Development Cooperation

- Ten-Year Anniversary of Joining the OECD DAC: Achievements and Tasks Ahead
- Rise in Greenhouse Gas Emission Targets Set by the International Community and Korea's Response

## Research Cooperation Projects



Office of  
President

## Heungchong Kim President

FTA, Europe Economy/EU/ASEM, Economic Growth and Intergration  
E. hckim@kiep.go.kr

## Jina Kim Secretary to President

T. 82-44-414-1107  
E. jinakim@kiep.go.kr

## Strategic Committee

## Young Gui Kim Chair

Econometric Modelling/Regional Trade Agreement/  
Economic Analysis of RTA  
T. 82-44-414-1188  
E. ygkim@kiep.go.kr

## Public Relations and Outreach Team

## Juneyoung Choi Head of Team

Supervision of PR and Outreach Affairs  
T. 82-44-414-1061  
E. jc@kiep.go.kr

## Kyounghae Jang Senior Researcher

ePR/Youtube  
T. 82-44-414-1117  
E. khjang@kiep.go.kr

## Hyunjoo Noh Senior Researcher

Media Relations  
T. 82-44-414-1210  
E. hjnoh@kiep.go.kr

## Bora Kang Senior Researcher

ePR  
T. 82-44-414-1334  
E. brkang@kiep.go.kr



## Leadership Contacts

### Office of Vice President

**Sung-Chun Jung** Vice President  
Japan/Environment/Technology&Economy International Macroeconomics  
T. 82-44-414-1202  
E. jung@kiep.go.kr

**Hye Ian Um** Secretary to Vice President  
T. 82-44-414-1131  
E. hlum@kiep.go.kr

### G20 Research Support Group

**Sung-Chun Jung** Manager  
Japan/Environment/  
Technology&Economy International Macroeconomics  
T. 82-44-414-1202  
E. jung@kiep.go.kr

**Kyong Lim CHOI** Distinguished Fellow  
G20 Research  
T. 82-44-414-1010  
E. klchoi@kiep.go.kr

### Research Planning & Coordination Dept.

**Young Gui Kim** Senior Director General  
Econometric Modelling/Regional Trade Agreement/  
Economic Analysis of RTA  
T. 82-44-414-1188  
E. ygkim@kiep.go.kr

## Research Bureau Contacts



### International Macroeconomics & Finance Dept.

**Sungbae An** Director  
International Macroeconomics  
T. 044-414-1190  
E. sungbae@kiep.go.kr

#### International Macroeconomics Team

**Minsoo Han** Head of Team  
International Macroeconomics, Growth  
T. 82-44-414-1153  
E. mshan@kiep.go.kr

**Sang-Ha Yoon** Associate Research Fellow  
International Macroeconomics  
T. 044-414-1151  
E. @kiep.go.kr

**Jinhee Lee** Senior Researcher  
International Macroeconomics  
T. 82-44-414-1183  
E. jinhee@kiep.go.kr

**Deok Ryong Yoon** Senior Research Fellow  
Financial Cooperation/Exchange rate/  
North-South Macro financial Issues  
T. 82-44-414-1068  
E. dryoon@kiep.go.kr

**Subin Kim** Senior Researcher  
International Macroeconomics  
T. 82-44-414-1228  
E. sbkim@kiep.go.kr

#### International Finance Team

**Hyo Sang Kim** Head of Team  
International Finance  
T. 82-44-414-1065  
E. hyosangkim@kiep.go.kr

**Da Young Yang** Senior Researcher  
International Finance  
T. 82-44-414-1223  
E. dyyang@kiep.go.kr

**Yuri Kim** Researcher  
International Finance  
T. 82-44-414-1326  
E. yrkim@kiep.go.kr

**Young Sik Jeong** Senior Research Fellow  
International Finance/Regional Financial Cooperation  
T. 044-414-1218  
E. ysjeong@kiep.go.kr

**Eunjung Kang** Senior Researcher  
International Finance  
T. 82-44-414-1214  
E. ejkang@kiep.go.kr

## Research Bureau Contacts

### International Trade Dept.

**Chankwon Bae** Director  
International Trade/Industrial organization  
T. 82-44-414-1208  
E. ckbae@kiep.go.kr

#### Trade and Investment Policy Team

**Kyong Hyun Koo** Head of Team  
Labor/International Trade  
T. 82-44-414-1271  
E. khkoo@kiep.go.kr

**Jong Duk Kim** Research Fellow  
Services Trade/FDI/Multilateral Trade  
T. 82-44-414-1181  
E. jongduk.kim@kiep.go.kr

**Hyuk-Hwang Kim** Principal Researcher  
FDI/International Trade  
T. 82-44-414-1135  
E. hhkim@kiep.go.kr

**Min-Sung Kim** Senior Researcher  
Rules of Origin/Trade Facilitation/TBT  
T. 82-44-414-1113  
E. mskim411@kiep.go.kr

**Chul Chung** Senior Research Fellow  
International Trade/Economic Integration  
T. 82-44-414-1184  
E. cchung@kiep.go.kr

**Sangjun Yea** Associate Research Fellow  
Investment/Trade Policy  
T. 82-44-414-1058  
E. jgkang@kiep.go.kr

**Hyeri Park** Senior Researcher  
RTA/Domestic support policy/  
Government Procurement/Trade remedies  
T. 82-44-414-1029  
E. hrpark@kiep.go.kr

**Min-chirl Chung** Senior Researcher  
International Trade/Applied Microeconomics  
T. 82-44-414-1052  
E. mcchung@kiep.go.kr

## Research Bureau Contacts

### Trade Agreement Team

**Moonhee Cho** Head of Team  
RTA/TBT/NAMA  
T. 82-44-414-1200  
E. mhcho@kiep.go.kr

**Soo Hyun Oh** Associate Research Fellow  
International Trade  
T. 82-44-414-1186  
E. shoh@kiep.go.kr

**Jungu Kang** Principal Researcher  
International Trade/Trade in Services/GVC  
T. 044-414-1058  
E. jgkang@kiep.go.kr

**Saebyul Yoo** Senior Researcher  
FTA/TBT/Environment  
T. 82-44-414-1083  
E. sbyoo@kiep.go.kr

**Dahin Kim** Researcher  
International Trade  
T. 044-414-1088  
E. kimdh@kiep.go.kr

**Jin Kyo Suh** Senior Research Fellow  
WTO/FTA/Trade Policy/Agricultural Trade  
T. 82-44-414-1156  
E. jksuh@kiep.go.kr

**Cheon-Kee Lee** Associate Research Fellow  
WTO/FTA  
T. 82-44-414-1361  
E. leeck@kiep.go.kr

**Hye Yoon Keum** Senior Researcher  
FTA/Trade  
T. 82-44-414-1205  
E. hykeum@kiep.go.kr

**Min ji Kang** Senior Researcher  
WTO/FTA/Trade Law  
T. 82-44-414-1196  
E. mjkang@kiep.go.kr

## Research Bureau Contacts

### New Trade Strategy Team

**Kyu Yub Lee** Head of Team  
International Trade/Digital Economy  
T. 82-44-414-1233  
E. kylee@kiep.go.kr

**Hyunsoo Kim** Associate Research Fellow  
RTA/IPRs  
T. 82-44-414-1087  
E. kimhs@kiep.go.kr

**Ji Hyun Park** Principal Researcher  
WTO/International Trade/E-commerce  
T. 82-44-414-1136  
E. jhpark@kiep.go.kr

**Ji Hyeon Kim** Researcher  
Trade Agreement  
T. 82-44-414-1031  
E. jihyeon@kiep.go.kr

**Nakgyoon Choi** Visiting Research Fellow  
International Trade  
T. 82-44-414-1079  
E. ngchoi@kiep.go.kr

**Jukwan Lee** Associate Research Fellow  
Trade Policy  
T. 82-44-414-1089  
E. jklee@kiep.go.kr

**Jun-Hyun Eom** Senior Researcher  
WTO Rules/Trade Laws  
T. 82-44-414-1149  
E. jheom@kiep.go.kr

## Research Bureau Contacts

### Center for Area Studies

**Choongjae Cho** Deputy President  
Indian and South Asian Economies  
T. 044-414-1025  
E. cjcho@kiep.go.kr

**Dae Young Song** Executive Specialist  
Research Networks in Area Studies/  
GPAS/KEEP Project  
T. 044-414-1175  
E. dysong@kiep.go.kr

**In Jee Yoo** Researcher  
KIEP Visiting Scholars Program  
T. 044-414-1544  
E. ijyoo@kiep.go.kr

**Bandi Kang** Researcher  
EMERiCs/CSF/KAAS  
T. 044-414-1076  
E. bdkang@kiep.go.kr

### Chinese Economy Dept.

**Seung Shin Lee** Director  
Chinese economy  
T. 044-414-1235  
E. sslee@kiep.go.kr

#### Chinese Economy and Trade Team

**Sang Baek Hyun** Head of Team  
Chinese Economy  
T. 044-414-1284  
E. sbhyun@kiep.go.kr

**Ji Young Moon** Associate Research Fellow  
Chinese Economy and Finance  
T. 044-414-1182  
E. morganmoon@kiep.go.kr

**Minsuk Park** Senior Researcher  
Chinese Economy  
T. 044-414-1511  
E. mspark@kiep.go.kr

**Wonho Yeon** Associate Research Fellow  
US-China Trade/China-Japan-Korea  
Economic Cooperation/Human Capital  
T. 044-414-1022  
E. whyeon@kiep.go.kr

**Su Yeob Na** Principal Researcher  
Chinese Economy  
T. 044-414-1072  
E. syna@kiep.go.kr

**Jonghyuk Oh** Senior Researcher  
China's Digital Economy / AI Industry /  
Sharing Economy / Startup ecosystem  
T. 044-414-1286  
E. ojoh@kiep.go.kr

## Research Bureau Contacts

**Jin Hee Hong** Senior Researcher  
Chinese Economy  
T. 044-414-1243  
E. jhhong@kiep.go.kr

**Young Sun Kim** Senior Researcher  
Chinese Economy  
T. 044-414-1272  
E. youngsun@kiep.go.kr

**Yun Mi Oh** Senior Researcher  
Chinese Economy  
T. 044-414-1203  
E. ymoh@kiep.go.kr

**Hyo Jin Lee** Senior Researcher  
Chinese Economy  
T. 044-414-1057  
E. hyojinlee@kiep.go.kr

**Ko Un Cho** Senior Researcher  
Chinese Economy  
T. 044-414-1145  
E. kucho@kiep.go.kr

**Hye Yun Kim** Researcher  
Chinese Economy  
T. 044-414-1243  
E. hykim@kiep.go.kr

### China Region and Strategy Team

**Jihyun Jung** Head of Team  
Chinese Economy  
T. 044-414-1280  
E. jhjung@kiep.go.kr

**Jaichul Heo** Associate Research Fellow  
Chinese Politics/East Asian International Relations/  
Network Analysis  
T. 044-414-1042  
E. jcheo@kiep.go.kr

**Hong Won Kim** Senior Researcher  
Southern China  
T. 044-414-1278  
E. hwkim@kiep.go.kr

**Joo Hye Kim** Senior Researcher  
Bohai Bay Region  
T. 044-414-1283  
E. joohye@kiep.go.kr

**Jae Hee Choi** Researcher  
China's regional economy  
T. 044-414-1098  
E. jhchoi@kiep.go.kr

**Pyeong Seob Yang** Senior Research Fellow  
Chinese Economy/Industry Trade  
T. 044-414-1121  
E. psyang@kiep.go.kr

**Won Seok Choi** Associate Research Fellow  
China Industry Research/Chinese Enterprise Research  
T. 044-414-1048  
E. wschoi@kiep.go.kr

**Jinhee Pak** Senior Researcher  
Central China  
T. 044-414-1285  
E. jhpak@kiep.go.kr

**Ji Won Choi** Researcher  
Northeast China  
T. 044-414-1290  
E. jwchoi@kiep.go.kr

### KIEP Beijing Office

**Sang Hun Lee** Deputy Director  
China's Regional Economy  
T. 86-10-8497-2870/1/2  
E. shlee@kiep.go.kr

**Hanna Lee** Senior Researcher  
Eastern China  
T. 86-10-8497-2870/1/2  
E. leehn@kiep.go.kr

## Research Bureau Contacts

### Advanced Economies Dept.

**June Dong Kim** Director  
Trade in Services/FDI  
T. 044-414-1028  
E. jdkim@kiep.go.kr

#### Japan and East Asia Team

**June Dong Kim** Head of Team  
Trade in Services/FDI  
T. 044-414-1028  
E. jdkim@kiep.go.kr

**Gyu-Pan Kim** Senior Research Fellow  
Japanese Economy/Industry  
T. 044-414-1017  
E. keiokim@kiep.go.kr

**Boram Lee** Senior Researcher  
East Asia Economy  
T. 044-414-1045  
E. brlee@kiep.go.kr

**SeungHyun Kim** Senior Researcher  
Japanese Economy  
T. 044-414-1035  
E. shkim@kiep.go.kr

**Hyung-Gon Jeong** Senior Research Fellow  
North East Asian Economies  
T. 044-414-1127  
E. hgjeong@kiep.go.kr

**Hyong-Kun Lee** Principal Researcher  
Japan/National Competitiveness/Feasibility Study  
T. 044-414-1069  
E. hklee@kiep.go.kr

**JungEun Lee** Senior Researcher  
Japanese Economy  
T. 044-414-1236  
E. leeje@kiep.go.kr

**Wonju Son** Researcher  
East Asia Economy  
T. 044-414-1287  
E. wjson@kiep.go.kr



## Research Bureau Contacts

### Americas Team

**Yeo Joon Yoon** Head of Team  
North American Economy  
T. 044-414-1166  
E. yoonyj@kiep.go.kr

**Sungwoo Hong** Associate Research Fellow  
Latin American Economy/Public Pension  
T. 044-414-1150  
E. swhong@kiep.go.kr

**Jino Kim** Principal Researcher  
Mexico/Central America  
T. 044-414-1085  
E. jokim@kiep.go.kr

**Misook Park** Senior Researcher  
Central/South America  
T. 044-414-1105  
E. misookp@kiep.go.kr

**Jeewoon Rim** Senior Researcher  
International Cooperation  
T. 044-414-1273  
E. jwrim@kiep.go.kr

**Gu Sang Kang** Associate Research Fellow  
North American Economy/  
Industrial Organization/Applied Microeconomics  
T. 044-414-1099  
E. gskang@kiep.go.kr

**Seungho Lee** Associate Research Fellow  
Central and South America  
T. 044-414-1211  
E. seungholee@kiep.go.kr

**Jonghyuk Kim** Senior Researcher  
North American Economy  
T. 044-414-1193  
E. jhkim@kiep.go.kr

**Hyuk Ju Kwon** Senior Researcher  
North American Economy  
T. 044-414-1086  
E. hjkwon@kiep.go.kr

## Research Bureau Contacts

### Europe Team

**Dong Hee Joe** Head of Team  
Europe/Applied Microeconomics  
T. 044-414-1123  
E. dhjoe@kiep.go.kr

**Cheol-Won Lee** Principal Researcher  
Central/Eastern Europe  
T. 044-414-1071  
E. cwlee@kiep.go.kr

**Hyun Jean Lee** Senior Researcher  
EU/Western Europe  
T. 044-414-1226  
E. hjeanlee@kiep.go.kr

**Hyung Jun Yoon** Researcher  
European Economy  
T. 044-414-1064  
E. hjyoon@kiep.go.kr

**Youngook Jang** Associate Research Fellow  
Europe/Applied Microeconomics  
T. 044-414-1221  
E. yojang@kiep.go.kr

**Taehyun Oh** Senior Researcher  
EU/Southern Europe/IPE  
T. 044-414-1159  
E. asroc101@kiep.go.kr

**You Jin Lim** Researcher  
European Economy  
T. 044-414-1064  
E. yjlim@kiep.go.kr

## Research Bureau Contacts

### New Southern Policy Dept.

**Kwon Hyung Lee** Director  
Middle Eastern Economy/Industrial and Energy Policy  
T. 044-414-1073  
E. khlee@kiep.go.kr

### Southeast Asia and Oceanica Team

**Yungshin Jang** Head of Team  
Competition Policy / Southeast Asia  
T. 044-414-1263  
E. ysjang@kiep.go.kr

**Meeryung La** Associate Research Fellow  
Southeast Asia Economy  
T. 044-414-1054  
E. mrra@kiep.go.kr

**Sunhyung Lee** Associate Research Fellow  
Southeast Asia  
T. 044-414-1070  
E. sunhyunglee@kiep.go.kr

**Jaeho Lee** Senior Researcher  
Thailand/Vietnam  
T. 044-414-1134  
E. jhlee@kiep.go.kr

**Minlee Shin** Senior Researcher  
Southeast Asia  
T. 044-414-1154  
E. mlshin@kiep.go.kr

**Jegook Kim** Senior Researcher  
Southeast Asia  
T. 044-414-1039  
E. jegook@kiep.go.kr

**Soeun Kim** Researcher  
Indonesia  
T. 044-414-1335  
E. kse@kiep.go.kr

**Sungil Kwak** Associate Research Fellow  
Southeast Asia Economy  
T. 82-44-414-1050  
E. sikwak@kiep.go.kr

**Ina Choi** Associate Research Fellow  
Southeast Asia/Foreign policy  
T. 044-414-1049  
E. iachoi@kiep.go.kr

**Jaewan Cheong** Principal Researcher  
Southeast Asian Economy/  
Mekong River Development/FDI and Industry  
T. 044-414-1051  
E. jwcheong@kiep.go.kr

**Mingeum Shin** Senior Researcher  
Southeast Asian Economy(Philippines, Malaysia)  
T. 044-414-1196  
E. mgshin@kiep.go.kr

**Nayoun Park** Senior Researcher  
Southeast Asia  
T. 044-414-1245  
E. nypark@kiep.go.kr

**Mi Lim Kim** Researcher  
Southeast Asia  
T. 044-414-1096  
E. mlkim@kiep.go.kr

## Research Bureau Contacts

### India and South Asia Team

**Jeong Gon Kim** Head of Team  
Trade Policy/Digital Economy/  
India-Western Asia Economy  
T. 044-414-1093  
E. jgkim@kiep.go.kr

**Yoon Jae Ro** Associate Research Fellow  
South Asia  
T. 044-414-1143  
E. hbryu@kiep.go.kr

**Jung-Mi Lee** Senior Researcher  
India/South Asia  
T. 044-414-1252  
E. leejm@kiep.go.kr

**Jonghun Pek** Senior Researcher  
International Cooperation  
T. 044-414-1323  
E. jhpek@kiep.go.kr

**Hyoungmin Han** Associate Research Fellow  
Southeast Asia Economy/International Trade  
T. 044-414-1230  
E. hmhan@kiep.go.kr

**Doyeon Kim** Senior Researcher  
India/South Asia  
T. 044-414-1257  
E. dykim@kiep.go.kr

**Chihyun Yun** Senior Researcher  
India/South Asia  
T. 044-414-1327  
E. chyun@kiep.go.kr

### National Center for APEC Studies

**Yungshin Jang** Director  
APEC Affairs  
T. 044-414-1263  
E. ysjang@kiep.go.kr

**Soyoung Kwak** Senior Researcher  
APEC/KOPEC  
T. 044-414-1240  
E. sykwak@kiep.go.kr

**Eunbin Park** Researcher  
APEC  
T. 044-414-1046  
E. ebpark@kiep.go.kr

**Africa and Middle East Team**

**Kwon Hyung Lee** Head of Team  
Middle Eastern Economy/Industrial and Energy Policy  
T. 044-414-1073  
E. khlee@kiep.go.kr

**Munsu Kang** Associate Research Fellow  
Africa  
T. 044-414-1204  
E. kangms@kiep.go.kr

**Yejin Anna Kim** Senior Researcher  
Africa Studies/Development Economics  
T. 044-414-1116  
E. kimyj@kiep.go.kr

**Kwangho Ryou** Senior Researcher  
Middle East Economy  
T. 044-414-1165  
E. khryou@kiep.go.kr

**Soo Hyun Moon** Researcher  
Africa  
T. 044-414-1116  
E. shmoon@kiep.go.kr

**Young Ho Park** Senior Research Fellow  
Africa/ODA  
T. 044-414-1231  
E. parkyh@kiep.go.kr

**Sung Hyun Son** Senior Researcher  
Middle East  
T. 044-414-1266  
E. shson@kiep.go.kr

**Yunhee Jang** Senior Researcher  
Middle East and North Africa  
T. 044-414-1330  
E. yhjjang@kiep.go.kr

**Minji Jeong** Researcher  
Sub-Saharan Africa  
T. 044-414-1225  
E. mjeong@kiep.go.kr

**Kyu Tae Park** Researcher  
Africa  
T. 044-414-1293  
E. shmoon@kiep.go.kr

## Research Bureau Contacts



### New Southern Policy Dept.

**Joungho Park** Director  
Russia-CIS Politics & Economy  
T. 044-414-1255  
E. jounghopark@kiep.go.kr

#### Russia and Eurasia Team

**Joungho Park** Head of Team  
Russian-CIS Politics & Economy  
T. 044-414-1255  
E. jounghopark@kiep.go.kr

**Seok Hwan Kim** Visiting Research Fellow  
Russia/International Relations/Energy  
T. 044-414-1081  
E. kimsh@kiep.go.kr

**Dongyeon Jeong** Senior Researcher  
Mongolia and Caucasus region  
T. 044-414-1167  
E. dyjeong@kiep.go.kr

**Jiyoung Min** Senior Researcher  
Russia/CIS Economy  
T. 044-414-1095  
E. jymin@kiep.go.kr

**Yeo Cheon Jeong** Senior Research Fellow  
Russia/Korea-Russia Economic Cooperation  
T. 044-414-1062  
E. ycjeong@kiep.go.kr

**Minhyeon Jeong** Associate Research Fellow  
Growth/Political Economics/Russia-CIS  
T. 044-414-1128  
E. mjeong@kiep.go.kr

**Boogyun Kang** Senior Researcher  
Russia/CIS Economy  
T. 044-414-1242  
E. bgkang@kiep.go.kr

**Cho Rong Kim** Researcher  
Russia/CIS Economy  
T. 044-414-1124  
E. crkim@kiep.go.kr

## Research Bureau Contacts

### International Cooperation Korean Unification Team

**Jangho Choi** Head of Team  
International Cooperation for Korean Unification  
T. 044-414-1152  
E. [choi.j@kiep.go.kr](mailto:choi.j@kiep.go.kr)

**Jung Kyun Rhee** Senior Researcher  
International Cooperation for Korean Unification  
T. 044-414-1084  
E. [jkrhee@kiep.go.kr](mailto:jkrhee@kiep.go.kr)

**Halin Han** Researcher  
International Cooperation for Korean Unification  
T. 044-414-1126  
E. [hlhan@kiep.go.kr](mailto:hlhan@kiep.go.kr)

**Yoojeong Choi** Senior Researcher  
North Korean Economy/Inter-Korean Relationship  
T. 044-414-1187  
E. [choiyj@kiep.go.kr](mailto:choiyj@kiep.go.kr)

**Bum Hwan Kim** Researcher  
International Cooperation for Korean Unification  
T. 044-414-1041  
E. [bhkim@kiep.go.kr](mailto:bhkim@kiep.go.kr)

**Dae-Eun, Lee** Researcher  
North Korea Trade  
T. 044-414-1055  
E. [delee@kiep.go.kr](mailto:delee@kiep.go.kr)

## Research Bureau Contacts

### Center for International Development Cooperation

**Yul Kwon** Deputy President  
ODA Policy/Southeast Asian Studies  
T. 044-414-1060  
E. ykwon@kiep.go.kr

### Policy Analysis Team

**Jione Jung** Head of Team  
Development Cooperation/ODA Policy/  
Climate Finance  
T. 044-414-1182  
E. jjung@kiep.go.kr

**Ju Young Lee** Senior Researcher  
Development Cooperation/ODA Policy  
T. 044-414-1253  
E. jylee@kiep.go.kr

**Jeonghwan Yun** Associate Research Fellow  
ODA Policy / Development Economics / Labor  
Economics / Applied Microeconomics  
T. 044-414-1209  
E. jhyun@kiep.go.kr

**Jiheui Song** Senior Researcher  
Environment and Development  
T. 044-414-1074  
E. jhsong@kiep.go.kr

### Development Evaluation Team

**Yul Kwon** Head of Team  
ODA Policy/Southeast Asian Studies  
T. 044-414-1060  
E. ykwon@kiep.go.kr

**Jisun Jeong** Principal Researcher  
Development Evaluation/Multilateral Aid/  
Private Sector Development  
T. 044-414-1078  
E. jsjeong@kiep.go.kr

**Aila Yoo** Senior Researcher  
Development Cooperation/Aid for Trade  
T. 044-414-1239  
E. ailayoo@kiep.go.kr

**Eunsuk Lee** Associate Research Fellow  
Development Evaluation  
T. 044-414-1198  
E. eslee@kiep.go.kr

**Sang Mi Lee** Senior Researcher  
Development Cooperation/ODA Policy  
T. 044-414-1241  
E. smlee@kiep.go.kr



## Research Bureau Contacts

### Global Cooperation Strategy Team

**Jin-Young Moon** Head of Team  
Resource and Environmental Economics  
T. 044-414-1274  
E. jymoon@kiep.go.kr

**Seung Kwon Na** Senior Researcher  
Digital Economy  
T. 044-414-1130  
E. skna@kiep.go.kr

**Eunmi Kim** Researcher  
Energy & Environment/Digital Economy  
T. 044-414-1037  
E. emkim@kiep.go.kr

**Youngseok Park** Associate Research Fellow  
International Cooperation for Korean Unification/  
Conflict Theory  
T. 044-414-1032  
E. yspark@kiep.go.kr

**Sunghee Lee** Senior Researcher  
Climate Change/Digital Economy  
T. 044-414-1234  
E. leesh@kiep.go.kr